

# B.E.S.T.

(Basic Education for Safe Travel)



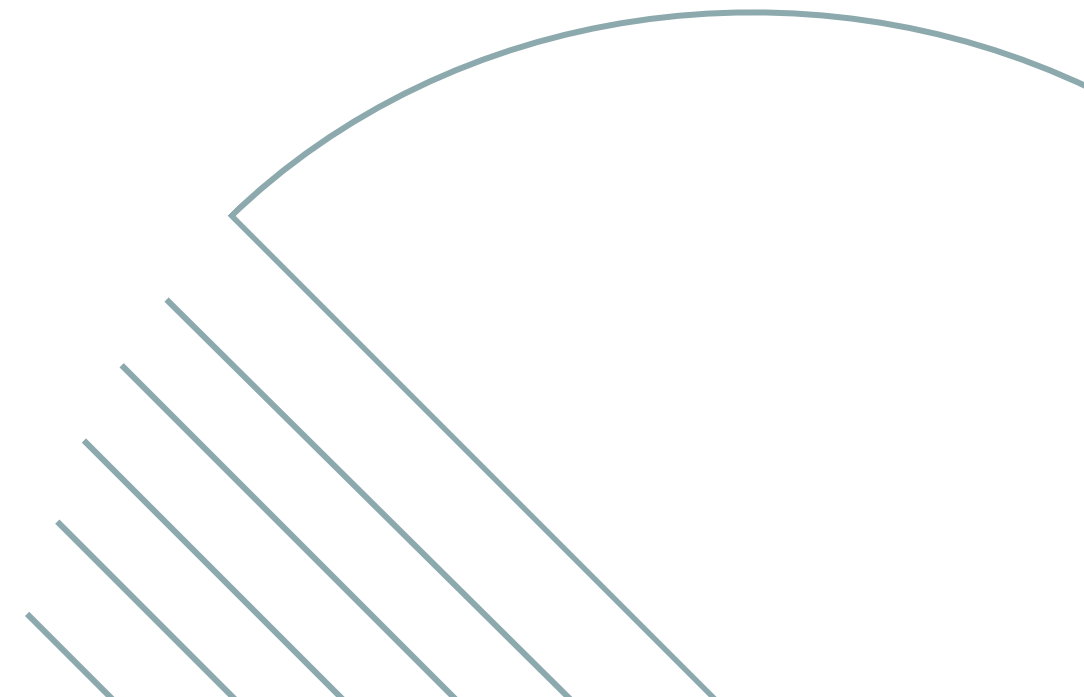
Hybrid education for child care providers and foster parents.

*Brought to you by:*



# WHY ARE WE MOVING AWAY FROM C.A.R.S.?

In short; to make things easier, remove barriers, and increase access to this required education across the state. This way, the curriculum stays updated and current through Car Seat Basics, people seeking the training will likely be able to find a Facilitator easier/closer, and time spent can be used with demonstrations and hands-on activities.



# WHAT DOES B.E.S.T. LOOK LIKE?

## Hybrid Format

### STEP 1

60-90 minute online training  
(Car Seat Basics)

### STEP 2

60-90 minute in-person,  
hands-on practice with car seats  
and the attendee's vehicle





# WHO CAN FACILITATE B.E.S.T.?

Car Seat Technician  
Proxy

OR

Car Seat Technician  
Instructor



**MINNESOTA  
SAFETY COUNCIL**  
CHAPTER OF THE NATIONAL SAFETY COUNCIL 

# HOW DO I BECOME A PROXY?

- Must be a technician for at least 6 months.
- Have superior CPS technical and communication skills gained from working many events and having extensive hands-on experience.
- Work with another technician and an instructor to fill out proxy paperwork
  - *Tech/Instructor must work with you on 3 different types of seats*

- Submit paperwork and \$25 payment to Safe Kids World Wide at: [cert.safekids.org](http://cert.safekids.org)



NATIONAL  
**CHILD  
PASSENGER  
SAFETY**  
CERTIFICATION

A Program of  
Safe Kids Worldwide

Thinking about these 3 complete observations, initial next to each of the following to indicate agreement:

**Working with the caregiver, the applicant:**

- Demonstrated a clear understanding of the technical issues and best practice related to child passenger safety.
- Communicated accurate technical information clearly
- Reviewed vehicle manuals, child restraint manuals and other available resources with the caregiver, as available.
- Provided clear instruction and guidance to the caregiver, showing an understanding of their needs and wishes in regard to the safe travel of their children.
- Included the caregiver in the seat check process, keeping them engaged and active.
- Sought guidance from a more experienced technician or instructor, when necessary.

---

**At least two times, I have observed the Technician working with other technicians as a senior/final checker.**

During these observations, the applicant:

- Provided clear communication with fellow technicians, confirming basic technical and use information with the caregiver.
- Made any corrections or clarifications without undermining the technician.
- Was respectful of the relationship between the caregiver and the technician they worked with.
- Sought guidance from a more experienced technician or instructor, when necessary.

# How do I find an instructor to help me become a proxy?

Reach out to your CPS Liaison or CPS State Coordinator if you are uncertain of what instructors are in your area.

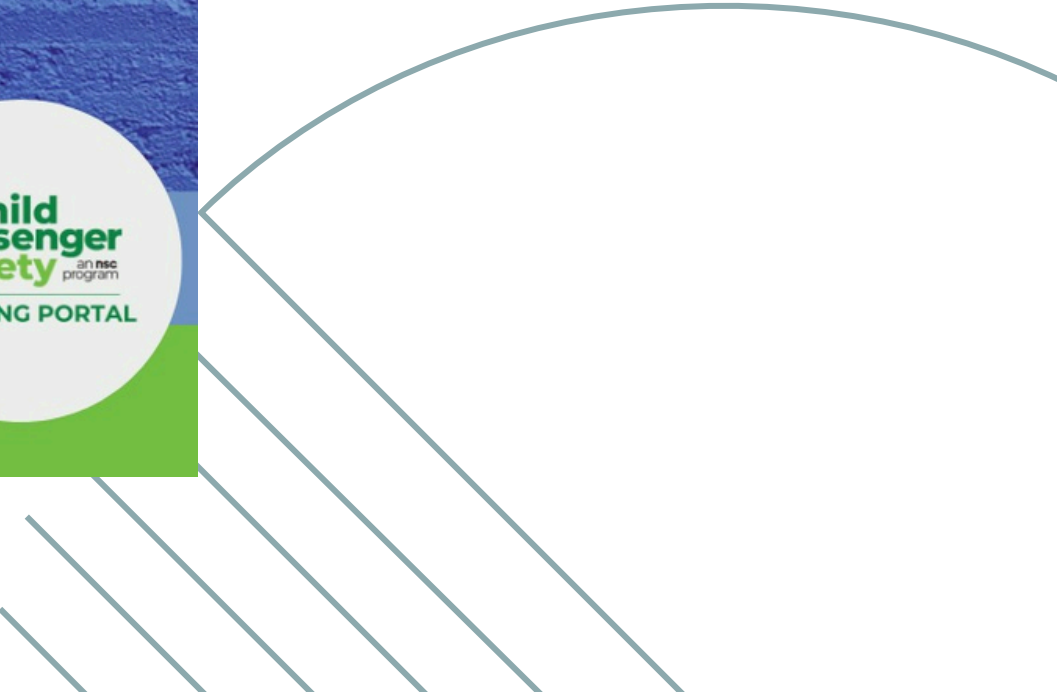
If you are asking a tech or instructor to sign off on your proxy paperwork that has never worked with you, it may take multiple events working together for them to feel comfortable with your skills and filling out the paperwork. Be sure to start the process early!

# WHAT IS CAR SEAT BASICS AND HOW DO I BECOME A MODERATOR?



Claudia Summers from National Safety Council

The image shows the cover of the 'Car Seat Basics' Learning Portal. At the top, the title 'Car Seat BASICS' is displayed in blue and black text, with the subtitle 'Keeping kids safe in cars as they grow' below it. Logos for NHTSA and the National Safety Council (NSC) are in the top right. A young child with glasses and a denim jacket stands with arms outstretched in the center. To the left are four circular icons representing car seat types: rear-facing, forward-facing, booster seat, and high chair. A row of seven yellow stars is positioned above the URL 'carseateducation.org/general-education'. In the bottom right, a circular badge reads 'Child Passenger Safety an nsc program LEARNING PORTAL'.





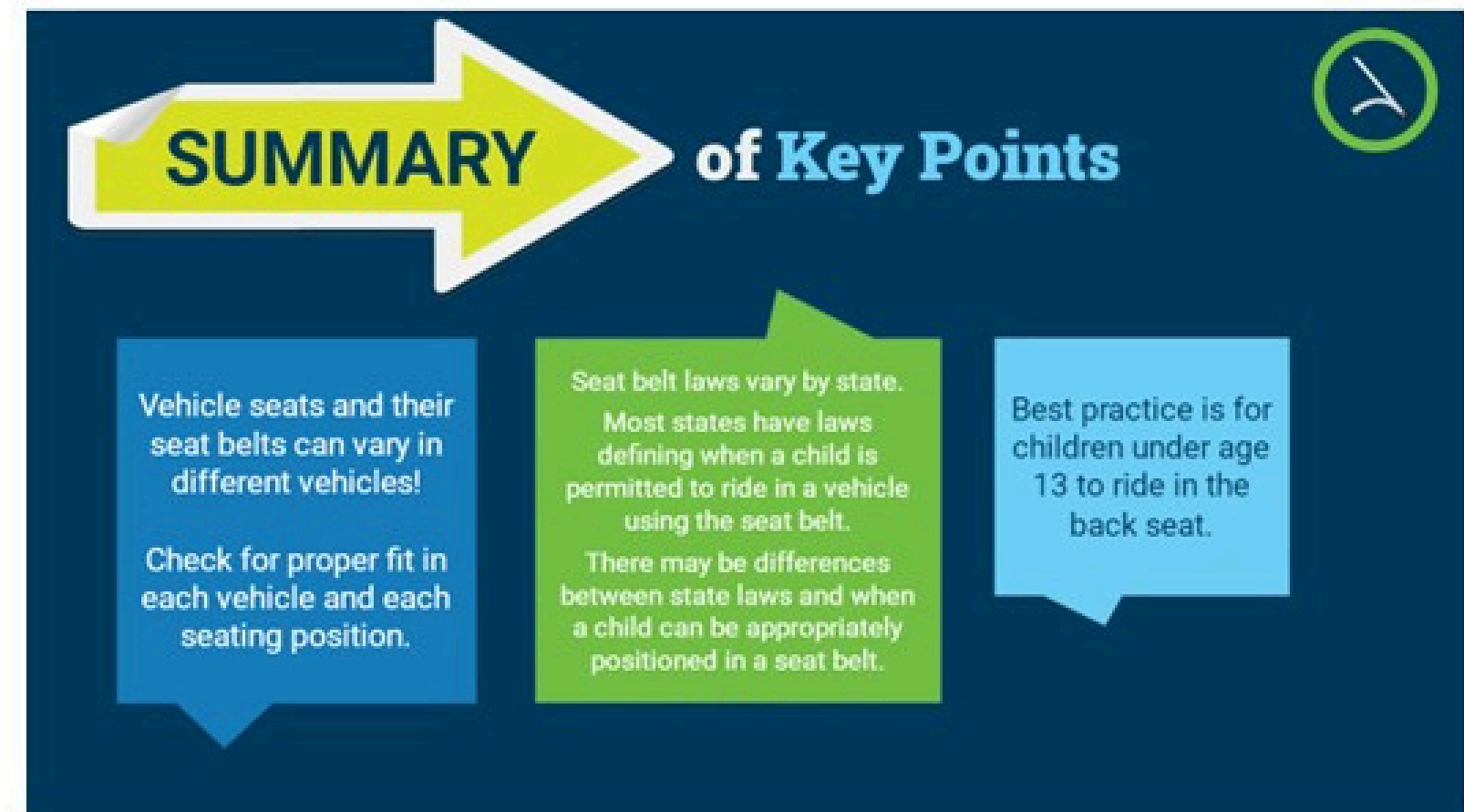
# Keep it simple.

- Focus on key audiences.
- Chunk the information.



# Keep it short.

- Keep it short and simple.
- Provide summaries of key points.



# Keep it positive.

- Encourage positive behavior change.



## HOW TO SAY IT

When talking to caregivers, your responses should take into account **the law** and **best practice**. A good approach is to provide some **guidance** along with some **resources** for the caregiver.

# Keep it real.

- Generate authentic activities.
- Provide feedback.

Examine this page from Marni's car seat instruction manual (Graco Extend2Fit).

What is the **maximum weight** Marni can use this car seat in rear-facing mode?

Select image to enlarge.

1-C Right Mode of Use					
4 lb (1.8 kg)	22 lb (10 kg)	40 lb (18.1 kg)	50 lb (22.5 kg)	65 lb (30 kg)	100 lb (45 kg)
<b>Rear-Facing with 5-Point Harness</b> Must be 49" (125 cm) or less: 4-22 lb (1.8-10 kg) less than 1 year old <b>MUST</b> be rear-facing. 22-50 lb (10-22.5 kg) <b>SHOULD</b> be rear-facing.*					
<b>Forward-Facing with 5-Point Harness</b> Must be 49" (125 cm) or less: 22-50 lb (10-22.5 kg) can sit upright (unassisted) <b>CAN</b> be forward-facing. 50-65 lb (22.5-30 kg) <b>SHOULD</b> be forward-facing.*					
<b>Booster Mode with Vehicle Lap/Shoulder Seat Belt</b> Must be 43-57" (110.1-145 cm) tall and 4+ years old. 40-65 lb (18.1-30 kg) <b>CAN</b> be in booster mode. Over 65 lb (30 kg) <b>MUST</b> be in booster mode.*					

\*Check your local and state laws and the AAP/NHTSA recommendations. See page 25 for more information.

19

22.5 lbs.

50 lbs.

65 lbs.



Correct! Well done.

This all-in-one car seat's manual clearly shows the maximum weights for each mode of use. For rear-facing use, the maximum is 50 lbs.

# Group Delivery of Online Learning Courses

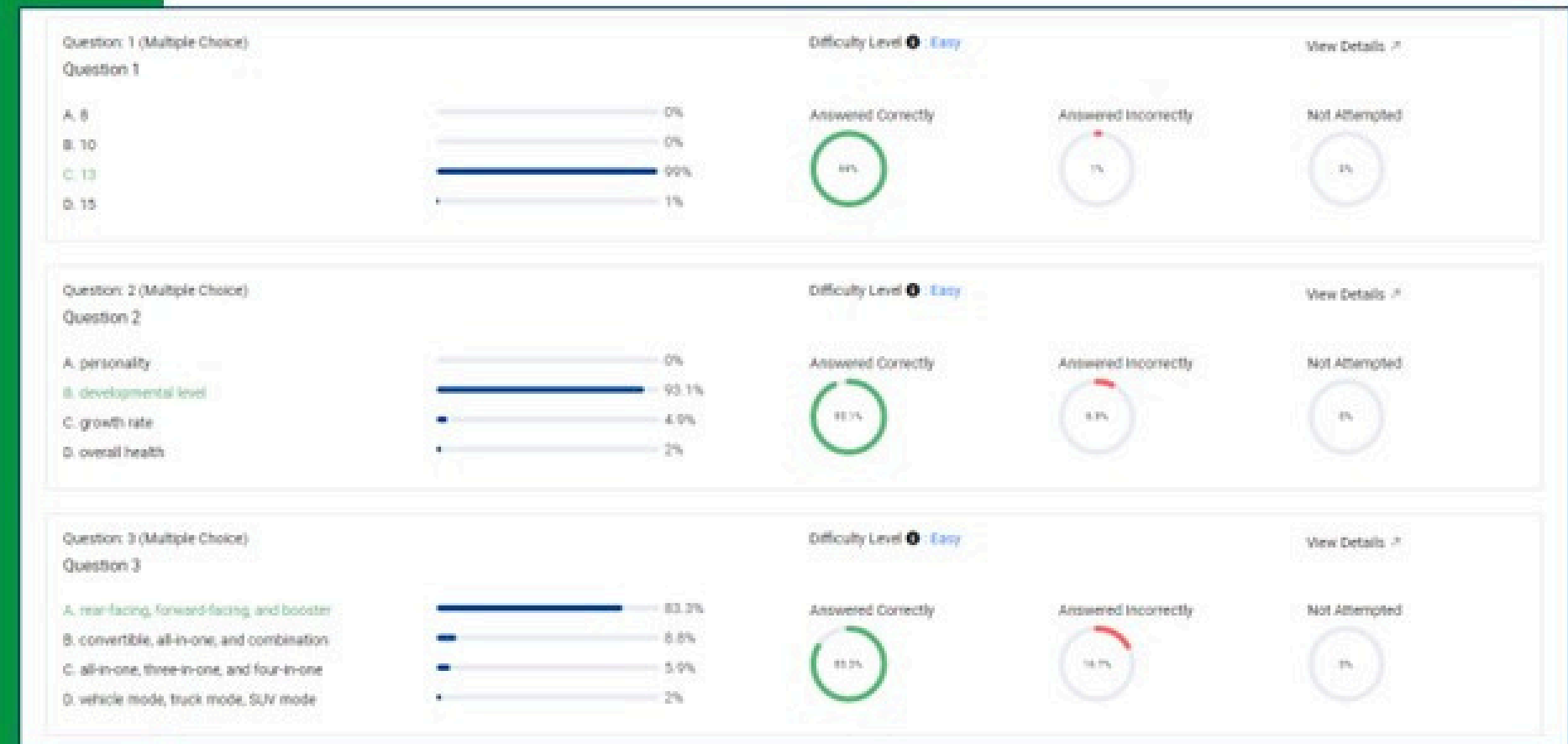
- Assign students
- Monitor progress
- Run completion reports



**Child  
Passenger  
Safety** an nsc  
program  
**LEARNING PORTAL**

# Group Admin Role

- Review quiz trends
- Switch to user



GC Bulk Actions Show All Roles Showing 50 students Show All Status Search by name or email

Name/Email	Status	Role	Last Accessed	Enrollment Date	Actions
William Woods william.woods@cps.edu	Completed 100%	Student	6 days ago	01-Feb-2024	View Progress Edit Progress View Activity Download Certificate
Andrew Carpenter andrew.carpenter@cps.edu	In Progress 0%	Student	1 day ago	01-	Remove Reset
James Robinson james.robinson@cps.edu	Not Started 0%	Student	Never	23-	Revoke Access Grant Access
Leah Woods leah.woods@cps.edu	Completed 100%	Student	1 month ago	28-	Assign Certificate Update Expiration Date
Marissa Woods marissa.woods@cps.edu	Completed 100%	Student	2 months ago	20-	Switch To
Kelly Cooper kelly.cooper@cps.edu	Completed 100%	Student	3 months ago	07-	
Leah leah@cps.edu	In Progress 0%	Student	3 months ago	06-	

# Contact Us

- Child Passenger Safety Learning Portal – [training@cpsboard.org](mailto:training@cpsboard.org)
- Kyndra Webb – [Kyndra.webb@nsc.org](mailto:Kyndra.webb@nsc.org)

# WHAT WILL BE DONE FOR THE IN-PERSON PORTION?

B.E.S.T. (Basic Education for Safe Travel)  
In-Person Evaluation

Competencies	Facilitator Initials	Participant Initials
Identified label for expiration and looked for recall based on model number and manufacture date. NHTSA.gov		
Demonstrated harness height and buckle adjustment.		
Demonstrated understanding of proper harness tightness and chest clip location.		
Demonstrated installation of the following: ___ Rear Facing Only      ___ Rear Facing Car Seat ___ Forward Facing Car Seat      ___ Booster Seat		
Car seat installed in vehicle on departure:    ___ YES    ___ NO		
Participant showed certificate of completion for Car Seat Basics.		



# WHAT SUPPLIES DO I NEED TO HAVE?



In-person evaluation sheet



Training doll(s)



Demo car seats, if caregiver does not have available.



Training vehicle seat (only in a situation where the attendee does not have vehicle of their own)

# HOW MANY PEOPLE CAN ATTEND B.E.S.T. AT THE SAME TIME?

Each BEST participant will need to demonstrate understanding of appropriate harness use and installation.

It is up to the BEST Facilitator to determine how to effectively manage time. You may find caregivers with their own seats will work best 1:1 but those without seats using demo car seats you provide could be done in small groups.



# THREE PILOT EXAMPLES



1:1



SMALL  
GROUP



DAYCARE  
HEAD START



# HOW DO I DOCUMENT COMPLETION OF B.E.S.T.?



## B.E.S.T. (Basic Education for Safe Travel) In-Person Evaluation

Competencies	Facilitator Initials	Participant Initials
Identified label for expiration and looked for recall based on model number and manufacture date. NHTSA.gov		
Demonstrated harness height and buckle adjustment.		
Demonstrated understanding of proper harness tightness and chest clip location.		
Demonstrated installation of the following: <input type="checkbox"/> Rear Facing Only <input type="checkbox"/> Rear Facing Car Seat <input type="checkbox"/> Forward Facing Car Seat <input type="checkbox"/> Booster Seat		
Car seat installed in vehicle on departure: <input type="checkbox"/> YES <input type="checkbox"/> NO		
Participant showed certificate of completion for Car Seat Basics.		

Notes:

*Participants must retain this form for their records for 5 years.*

*This does not certify you as a nationally certified Child Passenger Safety (CPS) Technician with Safe Kids Worldwide.*

I understand and agree that the sole purpose of this program is to help reduce the incidence of improper installation and use of car seats, booster seats and seat belts, and that this inspection and demonstration is being provided as an educational service to me. I realize that the program sponsors and certified child passenger safety technicians inspecting the seat(s) cannot fully evaluate the quality, safety, or condition of my car seat, booster seat, or the vehicle seat, safety belts, or any component of the vehicle now or in the future. Furthermore, I understand that the actions taken in this program will not guarantee the child's safety in a motor vehicle crash. I understand that it is important to read and follow the instruction manuals for both the vehicle and the car seat. For these reasons, I hereby release any program participants and any participating organizations or individuals, including the site owner, from any present or future liability for any injuries or damages that may result from a vehicle collision or otherwise.

Participant Name: \_\_\_\_\_ Signature: \_\_\_\_\_ Date: \_\_\_\_\_

For B.E.S.T. Course Facilitator: I attest the individual listed above has completed the online and in-person portions of the B.E.S.T. course.

B.E.S.T. Facilitator Name: \_\_\_\_\_ Date: \_\_\_\_\_ Tech #: \_\_\_\_\_

Signature: \_\_\_\_\_

Questions or concerns about your B.E.S.T. experience? Please reach out to the MN Occupant Protection Manager, Tara Helm, at [tara.helm@mnsc.org](mailto:tara.helm@mnsc.org).




# CAN I BE COMPENSATED FOR FACILITATING B.E.S.T.?

The MN Office of Traffic Safety is not setting any parameters on fees for this course. It can be offered for free or at a reasonable fee you set.



# WHEN CAN I START OFFERING B.E.S.T. IN MY COMMUNITY?

Once you've been approved to be a B.E.S.T. Facilitator by your CPS Liaison, you are able to begin offering B.E.S.T.



# HOW LONG CAN I CONTINUE TO OFFER C.A.R.S.?



C.A.R.S. can be offered until the end of 2024.

It will no longer be accepted for licensure in 2025.

# WHERE CAN I FIND B.E.S.T. INFORMATION ONLINE?

The screenshot shows a web browser window with the URL <https://msc.minnesotasafetycouncil.org/MNSC/Safety/Traffic-Safety/Child-Passenger-Safety.aspx>. The page header includes the Minnesota Safety Council logo, three "SAFE" buttons for Drive, Work, and Live, and a navigation menu with links for ABOUT US, TRAINING, SAFETY, MEMBERSHIP, EVENTS, DONATE, PRODUCTS, MEDIA, and JOB POSTINGS. On the right side, there are buttons for "Join Now", "Renew Now", "Sign in", and "Senior Insurance Discount", along with a "Keyword search" input field.

## Child Passenger Safety

### C.A.R.S. is transitioning to B.E.S.T. - Here's what you need to know!

The training curriculum C.A.R.S. (*Child and Restraint Systems*) is transitioning to B.E.S.T. (*Basic Education for Safe Travel*). The new hybrid education and training will streamline processes and enhance accessibility to this required education statewide. Additionally, prospective attendees will find it more convenient to locate B.E.S.T. facilitators nearby, optimizing time for practical demonstrations in their vehicles with hands-on learning experiences.

The new curriculum B.E.S.T. ensures the curriculum remains up to date by incorporating the online [Car Seat Basics](#), a free, introductory e-learning course for parents and caregivers and people who transport children, which is a program maintained by the National Safety Council.

#### Learn More!

Join us on Monday, June 24th or Wednesday, July 10th for a live virtual session. We will walk you through the process and answer questions! Both sessions will be recorded for those who cannot attend live.

<b>June 24 • 5:00 pm – 6:00 pm</b> B.E.S.T. Q & A • <a href="#">Join Here</a> LIVE VIRTUAL TRAINING	<b>July 10 • 1:00 pm – 2:00 pm</b> B.E.S.T. Q & A • <a href="#">Join Here</a> LIVE VIRTUAL TRAINING
---	---



# THANK YOU TO THE PLANNING COMMITTEE!

We are super thankful to our planning committee that has been working on the change from C.A.R.S. to B.E.S.T.

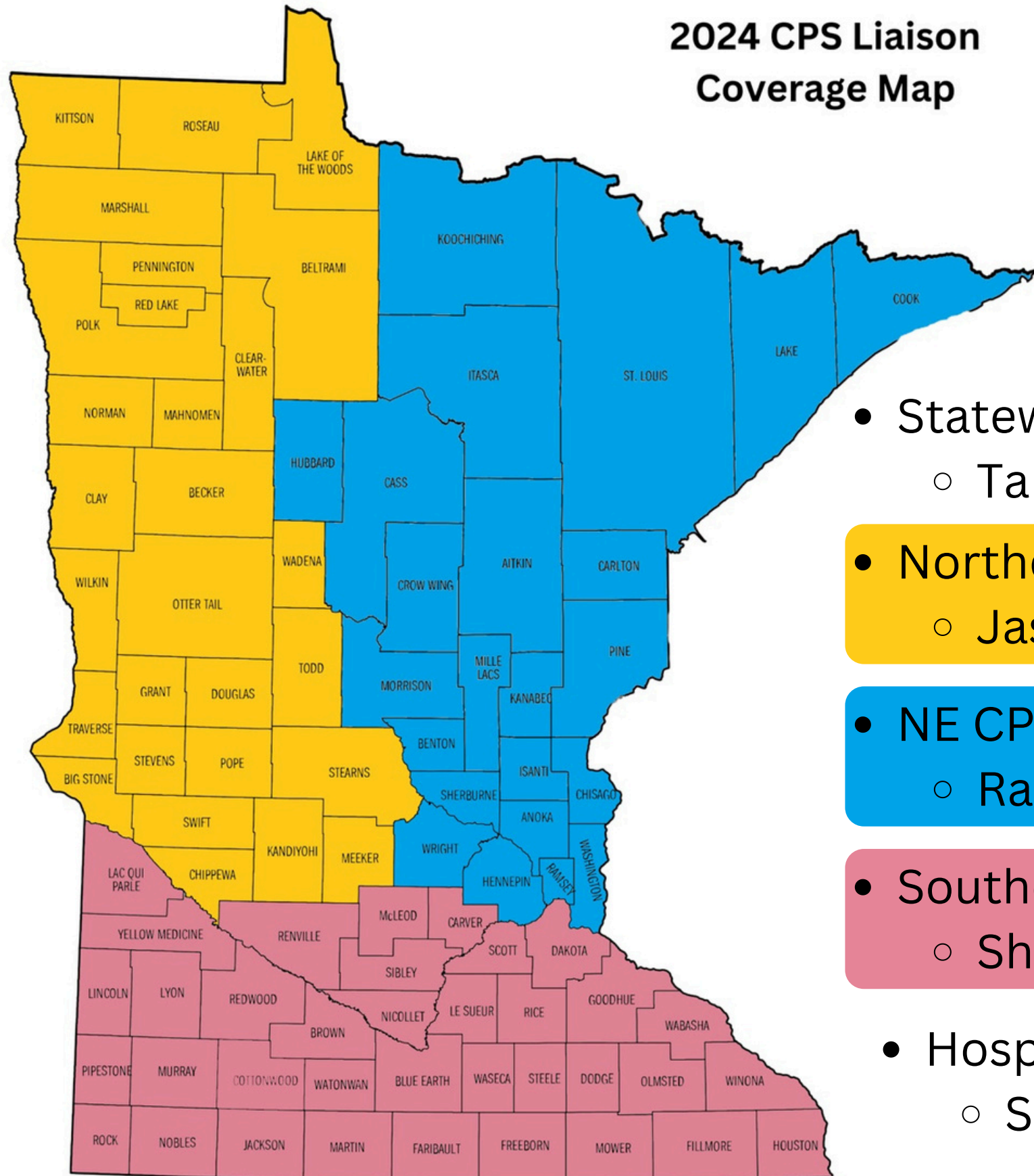
Sheila Denton  
Aimee Eggen  
Craig Flynn  
Tara Helm  
KaRee Liimatainen  
Randi Smith  
Dex Tuttle  
Jasmine Wangen



# QUESTIONS?



2024 CPS Liaison Coverage Map



- Statewide Community Programs & Occupant Protection Manager
  - Tara Helm - [tara.helm@mnscc.org](mailto:tara.helm@mnscc.org)
- Northern CPS Liaison
  - Jasmine Wangen - [jwangen@altru.org](mailto:jwangen@altru.org)
- NE CPS Liaison
  - Randi Smith - [rsmith@brahammn.gov](mailto:rsmith@brahammn.gov)
- Southern CPS Liaison
  - Sheila Denton - [sheila.denton@scmnems.org](mailto:sheila.denton@scmnems.org)
- Hospital Support
  - Shonette Micco - [shonette.m.micco@healthpartners.com](mailto:shonette.m.micco@healthpartners.com)